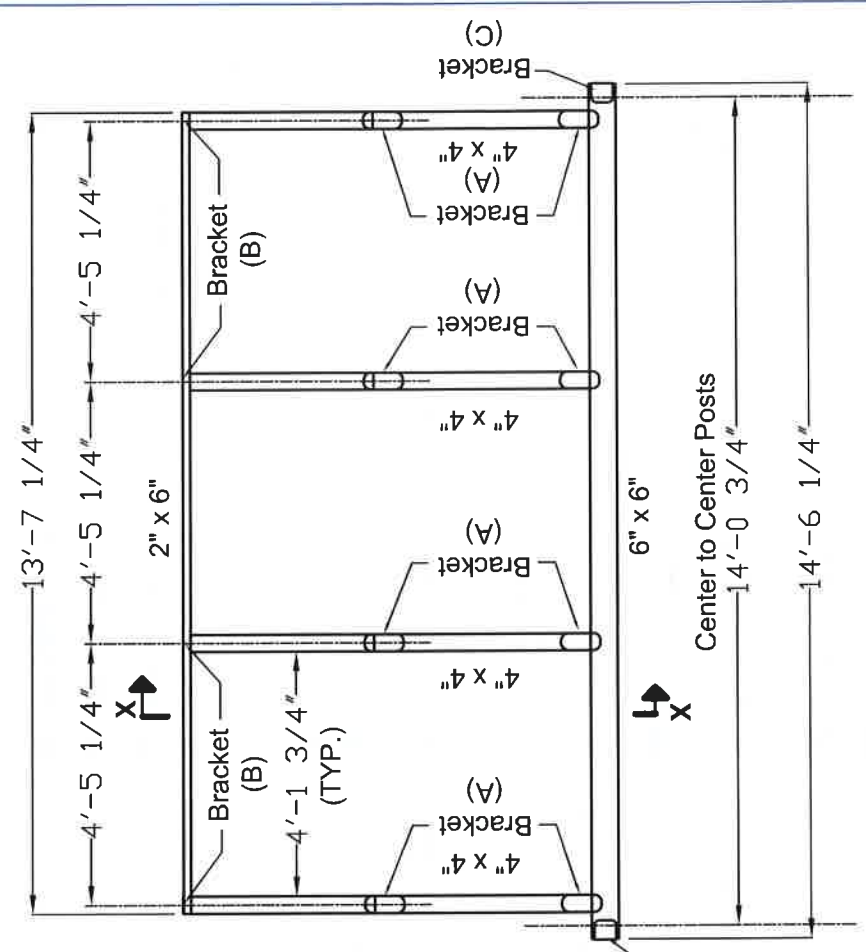



SECTION "X-X"



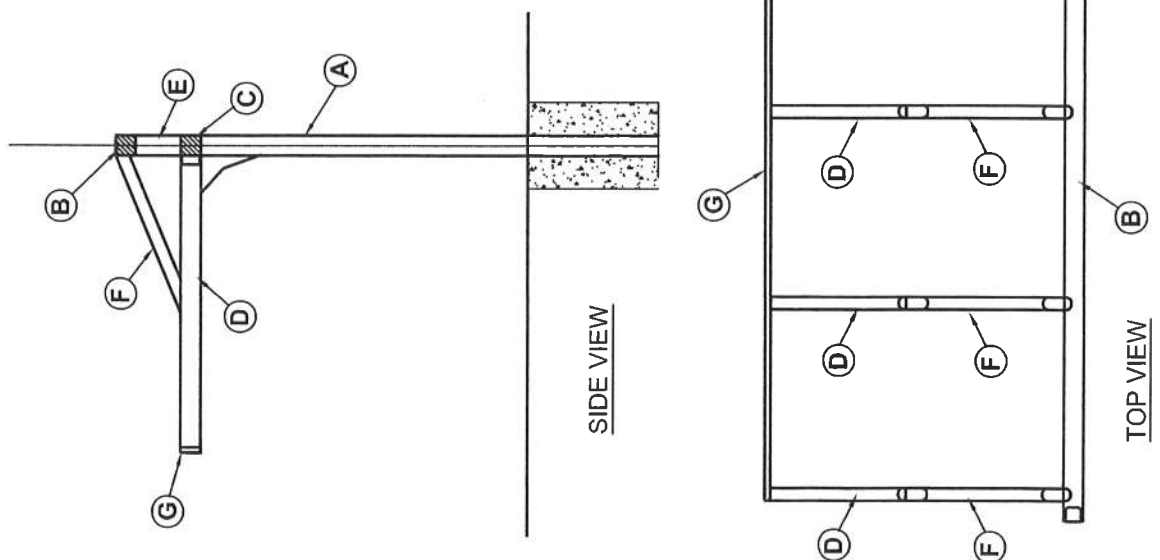
PLAN AT RIDGE BEAM



Single Cantilever Strip Track Canopy System

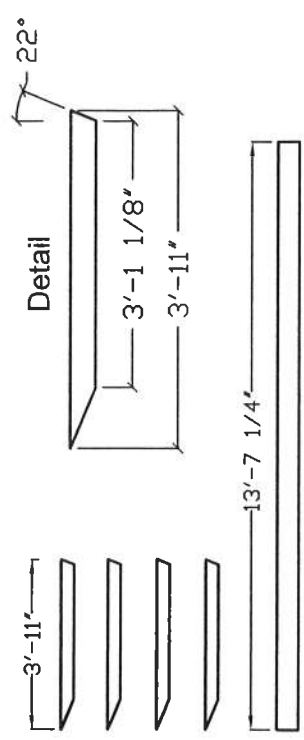
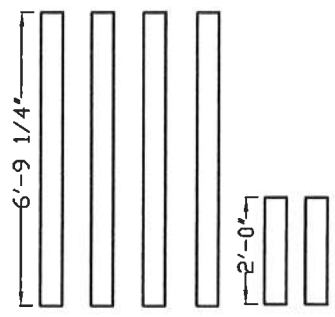
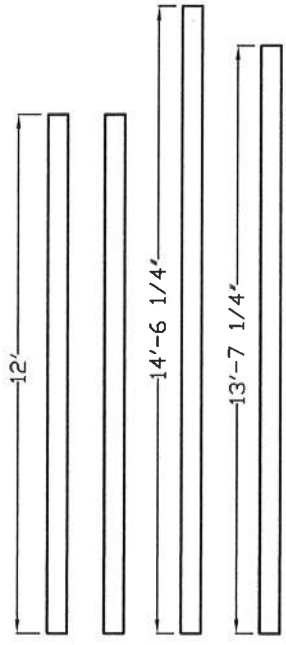
FILE:	DATE:	SCALE, NOT TO SCALE	DRAWN BY: JOAN MCINLAR
-------	-------	---------------------	------------------------

Single Cantilever Strip Track System



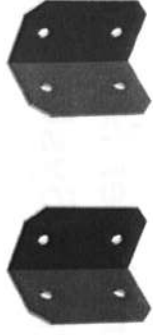
Quantity

- 2 — (A) 6" x 6" x 12'-0" Post
- 2 — (A) 6" x 6" x 12'-0" Post
- 1 — (B) 6" x 6" x 14'-6 1/4" Ridge Beam
- 1 — (C) 6" x 6" x 13'-7 1/4" Header
- 4 — (D) 4" x 6" x 6'-9 1/4" Beam
- 4 — (D) 4" x 6" x 6'-9 1/4" Beam
- 4 — (D) 4" x 6" x 6'-9 1/4" Beam
- 4 — (D) 4" x 6" x 6'-9 1/4" Beam
- 2 — (E) 4" x 6" x 2' Beam
- 2 — (E) 4" x 6" x 2' Beam
- 4 — (F) 4" x 4" x 3'-11" Support
- 4 — (F) 4" x 4" x 3'-11" Support
- 4 — (F) 4" x 4" x 3'-11" Support
- 4 — (F) 4" x 4" x 3'-11" Support
- 1 — (G) 2" x 6" x 13'-7 1/4" Header

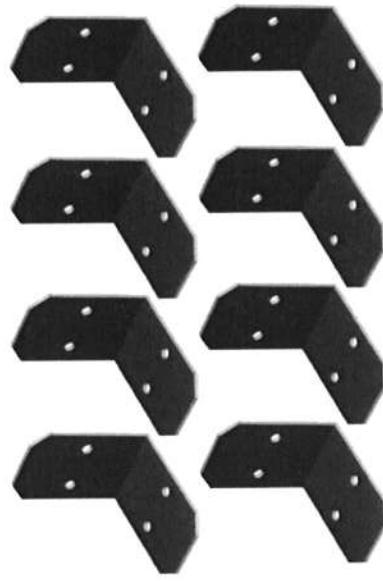




Bracket A (8)



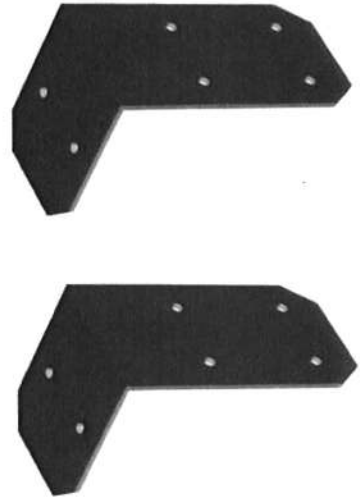
Bracket E (2)



Bracket B (8)



Bracket D (2)



Bracket C (2)

Single Cantilever Strip Track
Canopy System Bracket List

Wood Materials List to present to lumber company

2 - 6" x 6" x 12'

2 - 6" x 6" x 16'

5 - 4" x 6" x 8'

4 - 4" x 4" x 8'

1 - 2" x 6" x 16'



SHADETREE
Retractable Patio & Deck Canopies

6517 Busch Blvd. • Columbus, Ohio 43229
Phone: 614-844-5590 • Fax: 614-844-5591
Corporate e-mail: info@shadetreesamples.com • Display Booth: 1866-307-4225

FILE:

DATE:

SCALE: NOT TO SCALE

DRAWN BY: JOHN MOLNAR

Single Cantilever Strip Track Canopy System